

introducing



by

SUNTUP
EDITIONS

SUNTUP.PRESS



The Covers Collection

Limited Edition Fine Art Prints Featuring the Cover Artwork
From Stephen King's Most Beloved Novels,
Signed by the Original Artist.



SUNTUP EDITIONS
6789 QUAIL HILL PARKWAY #521, IRVINE, CA 92603
1-949-491-1415 • SUNTUP.PRESS • PAUL@SUNTUP.PRESS

© 2017 Suntup Editions
The Shining illustration © 1977-2017 by Dave Christensen
Pet Sematary illustration © 1983-2017 by Linda Fennimore
Misery illustration © 1987-2017 by Robert Giusti



INDEX

The Covers Collection	3
Collectible Archival Art Folio	7
The Covers Collection Kick-Off: Three Spectacular Illustrations	8
The Covers Collection Subscription Club	8
Here's How The Subscription Club Works	9
Remarque Print Subscription	9
Optional Framed Prints	10
Subscription Basics	11
Willy Wonka's Golden Ticket	12
Questions We Think You Might Ask	13
The Shining	18
Pet Sematary	19
Misery	20
Custom Framing	21
Collection Images	25

Download the media kit here:
<https://suntup.press/media/>



THE COVERS COLLECTION

Suntup Editions is pleased to announce the release of *The Covers Collection*. An extremely limited edition collection of fine art prints featuring the cover artwork from Stephen King's most classic novels, signed by the original artist.

Experience your favorite Stephen King classics like never before. Suntup Editions has been working with the artists of Stephen King's 1st trade edition hardcovers to showcase the cover art in a way previously unimagined. Now, for the first time, Stephen King collectors are able to showcase the classic artwork in the way it was initially intended to be viewed.

Bold, vibrant, up close, and printed on our highest quality paper, experience the full impact of the art. When publishers are presented with the artwork, they often alter the size, tone or color to fit the printing parameters, and add the title and author text. Now, you are able to appreciate the artwork in a way never before seen, signed by the original artist.

These Collector Grade 1st Edition, original cover art prints are exclusively available through Suntup Editions and are limited to only 100 copies each worldwide. Printed on our finest quality paper, in the highest detail imaginable, you can appreciate every brush stroke and pencil line of the original artwork from your favorite classics.

- Museum Quality Giclée prints of the first trade edition cover art.
- Signed and authorized by the original cover artist.
- Limited to only 100 copies worldwide, plus 10 Artist Proofs and 5 Publisher Proofs for private distribution.
- A limited selection of artwork in the series will include an original Remarque on the first 20 prints.
- Shipped with a *Certificate of Limitation and Authenticity* from the publisher.
- Printed on 300 GSM, 100% cotton fiber paper that is Acid-Free, Lignin-Free, Chlorine-Free and with No Optical Brighteners.
- Prints are embossed with our publisher's mark.
- View the artwork as originally intended, before the trade publisher's alterations.



- Your choice of size: Available in an 18" x 24" or 11" x 17"*.
- At launch, covers include: *The Shining* by Dave Christensen, *Pet Sematary* by Linda Fennimore and *Misery* by Bob Giusti. Future releases include *'Salem's Lot* by Dave Christensen, *Firestarter* and *Cujo* by Steven Stroud, *IT* by Bob Giusti, *Needful Things*, *Gerald's Game* and *Nightmares & Dreamscapes* by Rob Wood, and more to be announced.
- Also included is a selection of limited edition cover art including those by Ned Dameron, Stephen Gervais and Don Maitz.
- Available with or without professional framing (framing has acid-free backing and acid-free mattes with picture quality plexiglass which has inherent UV filters.)
- In stock at time of release and ready to ship, no waiting. Prints will be released at the rate of one every month.
- Optional archival Art Folio Box
- Professionally packaged and mailed safely.
- Don't miss this exclusive opportunity to own a complete set of these cover art prints, signed by the original artists.
- All prints are expertly printed in-house, so we have full control over printing and quality.

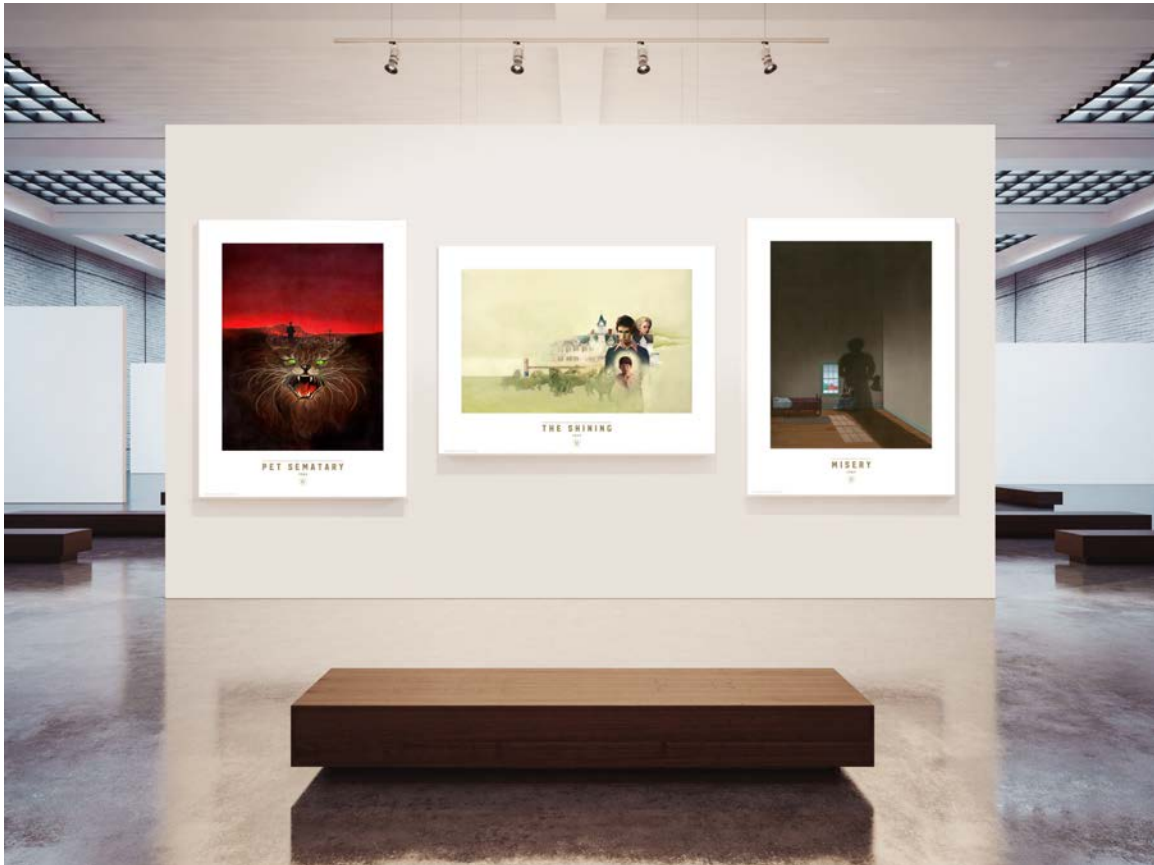
* Or 16" x 24" and 17" x 12.5" for some prints in order to maintain the aspect ratio of the originals.

11" X 17"



18" X 24"





The Covers Collection Launches with Pet Sematary, The Shining and Misery



COLLECTIBLE ARCHIVAL ART FOLIO

We realize many of you will not have the wall space to display all of the beautiful prints in this series. Don't let that stop you from collecting them. We have made available a custom, foil stamped archival art folio box, designed to fit both print sizes. Protect your prints from dust, dirt and other pollutants. These folio boxes shield and protect the prints and are constructed of archival quality board, lined with acid-free paper, with the exterior covered in a beautiful buckram cloth. Safely store, view and appreciate your prints in this archival art folio box.





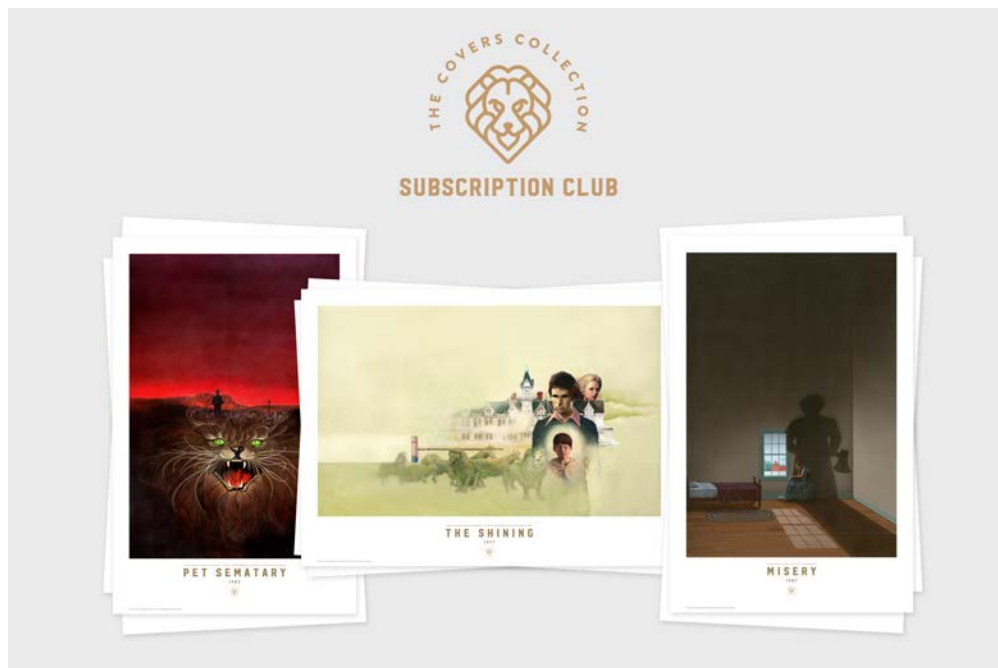
THE COVERS COLLECTION KICK-OFF: THREE SPECTACULAR ILLUSTRATIONS

Prints in *The Covers Collection* series will be released at the rate of one per month. For the launch of this exciting new series, we are starting out with three cover illustrations: *The Shining* by Dave Christensen, *Pet Sematary* by Linda Fennimore and *Misery* by Bob Giusti.

THE COVERS COLLECTION SUBSCRIPTION CLUB

Don't miss out on the opportunity to own all the prints, with matching numbers by subscribing to the series. As a Covers Collection Subscriber, you will receive a 20% discount on all prints purchased, and you are guaranteed a matching number on all releases.* (See below for details.)

* Some prints may have a smaller limitation than 100. So if matching numbers is important to you, you will want to order early and be sure to be within the first 50. The lowest limitation will be 50, and the highest 100.





HERE'S HOW THE SUBSCRIPTION CLUB WORKS

Make a single up-front payment for the first three in-stock prints at a 20% discount. After that, you will receive all future prints as they are released at 20% off the retail price, and you will be billed and shipped automatically for each print.

There is no obligation to remain a subscriber beyond your initial purchase of the first three prints. You may cancel at any time without penalty, although you will risk losing your matching number on future prints. As a subscriber, you may also purchase the optional archival Art Folio Box at a 15% discount off the retail price, and all frame upgrades at 10% off the retail price.

Subscriptions are Limited

There are a limited number of subscriptions available, and once it is sold out, it may not be offered again.

**"I WAS KNOCKED OUT WHEN I SAW THESE PRINTS.
I HAVE NEVER SEEN *PET SEMATARY* REPRODUCED TO
LOOK THIS WONDERFUL."**

— Linda Fennimore, Illustrator for *Pet Sematary*

REMARQUE PRINT SUBSCRIPTION

A limited selection of artwork in the series will include an original Remarque on the first 20 prints. Your up-front subscription price for a *Remarque Print Subscription*, at launch, will include the first two Remarqued prints, which are *Pet Sematary* and *The Shining*. For subsequent Remarque prints, you will be given right of first refusal on future prints with a Remarque. At that time you will have an opportunity to upgrade your non-Remarqued print for that month, to the Remarqued version.



You must be among the first 20 customers who order a Remarque print or a Remarque subscription in order to qualify. Once 20 individual Remarque prints or Remarque subscriptions are sold, this subscription will no longer be available for purchase. By purchasing an individual Remarque print, or a Remarque subscription, you are guaranteed right of first refusal on future Remarque prints.

Remarques are only available on the large print (18" x 24"), so when you purchase a Remarque subscription, you are subscribing to the large size prints. Limit one Remarque print per order (per print.)

OPTIONAL FRAMED PRINTS

All prints are offered with an option to purchase framing for the print. If you are a *Covers Collection Subscriber*, as each new print is released, you will have an opportunity to upgrade your next print to the framing option. You will also receive a 10% discount off the retail price of the frame. If you do not upgrade, you will simply receive the next print unframed.

The first time you purchase a Covers Collection Subscription, if you want a frame for any of the first three prints, you must add the applicable "Subscription Add-on: Frame" product to your cart. Discounts will be applied automatically.

Two framing options are available. If you would like to make sure all your framed prints have the same frame in order to be consistent, we offer a frame that will be the same for all prints in the series. We also offer a custom frame based on the artwork.

"I THINK THESE PRINTS ARE SPECTACULAR. I HAVE NOT SEEN BETTER. THEY'RE REALLY PERFECTION AND HAVE HELD TO THE COLORS WELL. IF I PUT THE PRINT RIGHT NEXT TO MY ORIGINAL OF *MISERY*, IT'S SPOT ON."

— Bob Giusti, Illustrator for *Misery*



SUBSCRIPTION BASICS

Subscription Level	Print Size	One-Time Up-Front Cost (3 Prints)	Future Prints (Monthly) Billed & Shipped Automatically	Non-Subscriber Retail Price	Subscription Savings
Small Print Subscription	11" x 17" & 17" x 12.5"	\$240* (\$300 without subscription)	\$80 each	\$100 each	\$60 on First Three Prints. \$20 each Future Print.
Large Print Subscription	18" x 24" & 16" x 24"	\$420* (\$525 without subscription)	\$140 each	\$175 each	\$105 on First Three Prints. \$35 each Future Print.
Remarque Print Subscription	18" x 24"	\$612*† (\$765 without subscription)	\$140 each (Non-Remarque) \$236 each (Remarque - requires manual upgrade)	\$175 each (Non-Remarque) \$295 each (Remarque)	\$35 each (Non-Remarque) \$59 each (Remarque)

* Prices exclude shipping

† (Includes *Pet Sematary* and *The Shining* Remarque prints.)

Benefits of a Subscription:

1. 20% discount on all current and future prints.
2. 15% discount on optional archival Art Folio Box.
3. 10% discount on framing.
4. Guaranteed matching numbers on all prints.
5. Never miss a print.
6. Live longer.

Print Number Requests

Numbers are assigned in the order in which a completed order is received. This includes both individual and subscription orders. Number requests may be made at checkout, but are not guaranteed.



WILLY WONKA'S GOLDEN TICKET

Growing up, Roald Dahl was my favorite author. Inspired by his work, we decided to ship one random order with a Golden Ticket. We'll call it the *Super Amazing Golden Suntup Ticket*. I know, not as cool sounding as Willy Wonka, but you get the idea. What does the lucky recipient of this ticket win? An original signed drawing by one of *The Covers Collection* artists. One-of-a-kind. Numbered 1/1. Kapow.



Terms & Conditions

- Up-front subscription cost is non-refundable
- You are not locked into anything. Cancel at any time without penalty.
- For subscriptions, after the first three prints are delivered, the fourth and all subsequent prints will be automatically shipped to you and billed to your credit card. This will continue until you cancel, or the program ends.
- Limit one Remarque print per customer (per print.)
- Have fun. Stress less.

"THESE PRINTS ARE AS GOOD AS I'VE EVER SEEN. THEY ARE BEAUTIFUL. THE PAPER LOOKS LIKE THE MOST EXPENSIVE QUALITY PAPER, IT'S VERY THICK, AND I LOVE THE WATERCOLOR TEXTURE OF THE PAPER ITSELF."

— Dave Christensen, Illustrator for *The Shining*



QUESTIONS WE THINK YOU MIGHT ASK

(QWTYMA for short; not to be confused with the QWERTY keyboard.)

Technically, we are not asked the following questions 'frequently'. In fact, at the launch of the series, we have not been asked any questions. Although I'm sure we will, and quite likely many we have not even thought of. If that happens, we'll be sure to add it. We present, our FAQ in training:

What type of paper is used?

We use 300 g/m² exhibition quality, fine art papers which have a 100% cotton base.

Is everything archival/acid-free (what does that mean)?

Yes, the paper on which the art is printed is Acid-Free, Lignin-Free, Chlorine-Free, and has no Optical Brighteners. It is also Gluten Free, Soy Free and Dairy Free. Well, that's all true except for the Gluten, Soy and Dairy part. The inks used are archival with a fade resistance and print longevity of 200 years. The folio box lining is Acid-Free and archival. Acid and lignin cause paper to deteriorate. If an acidic product comes into contact with paper, the acid can migrate, causing permanent damage and decay. In terms of Optical Brightening Agents (OBAs), to make paper look brighter, some manufacturers add chemicals to the base stock or coating. The paper we use does not have this chemical coating.

What type of printing is used?

The prints in *The Covers Collection* are Giclée prints, which are fine art digital prints made on inkjet printers. We use a top-of-the-line art printer, which produces the finest, most exceptional prints we have ever seen.

What does it mean when the prints are embossed?

We stamp all prints at the lower right corner with the publisher's mark. This is a seal impressed onto the print as a distinguishing mark using a cast iron and brass embosser. Makes it official-like. And it looks fancy.



Is every print approved by, and hand-signed by each artist?

Yes. When we presented this idea to the artists, they were over the moon with it. These prints are approved and hand-signed by the artist. No autopens in this house!

Will every print have a Remarque option? Will any of the 11" x 17" prints have a Remarque option?

Not all prints will have a Remarque, and the ones that do will be the large size only. Not enough space on the 11" x 17" for that.

How many prints are currently scheduled for publication? How many artists are on board?

Currently, there are fifteen prints planned in the series, and ten artists aboard *The Good Ship Lollipop*, with more to follow. It's a sweet trip, baby.

What is the limitation of these prints?

Most of the prints will run at a total limitation of 115. The breakdown is as follows: 100 available for sale, 10 Artist Proofs and 5 Publisher Proofs for private distribution. In some cases, the limitation will be 60 prints. The breakdown in this case is as follows: 50 available for sale, 5 Artist Proofs and 5 Publisher proofs for private distribution. It is important to be aware of this, because if matching numbers matters to you, you will want to get in early.

Will the folio box be available without a subscription? For both sizes?

You bet.

If there are several different Remarques for any print, can I choose which one I want?

Nope, sorry. Most Remarques will be the same for all prints, but if the artist decides to do different sketches across the run of 20, you will receive a random sketch.



Can I purchase a Subscription as well as individual prints?

Yes. Let's say you have a *Remarque Subscription* (large prints only), and you would like a smaller version of any of your prints, you can purchase that print individually and still receive 20% off the retail price because you are a subscriber.

If I don't buy a subscription, can I still get a Remarque print? And will I get right of first refusal on future Remarque prints?

Yes to both. Remarque prints are available to subscribers and non-subscribers. However, this is limited to the first 20 orders received. Also, subscribers will get 20% off the retail price.

Will I get right of right of first refusal for my number?

If you are a subscriber, you are guaranteed matching numbers unless you cancel. If you purchase an individual print, we can try to match your number but it's not guaranteed.

If I decide to cancel my subscription will I still be able to match future prints?

We can't guarantee number rights if you cancel. However, if the number is still available we will try to accommodate your request.

Will framing be available for each print?

Yes.

Will I be able to match my framing for all prints?

Yes, each print will have a standard frame & matte option, as well as a more individualized option.

Is Remarques really a word?

Yes. It is used to denote more than one Remarque. Although according to Merriam-Webster, a *Remarque* is a drawn, etched, or incised scribble or sketch done on the margin of a plate or stone and removed before the regular printing. So, although Remarque is widely used today to describe an original sketch an artist makes in a book, or in this case, an art print, it isn't really the right word for it. But we don't mind if you don't.



How much is shipping (US/International)?

A lot. (Kidding. It's not too bad.)

Will these prints ship flat or rolled?

Flat like the sales receipt that has been in your back pocket for a week.

What if I buy one print and then later want to match another print to that number?

We will try to accommodate your request but it's not guaranteed.

Can I add a subscription at a later date?

The subscriptions are limited and will be sold out as soon as one or all of the prints in the launch are sold. We may or may not offer it again. We can't say at this stage.

What if I decide to change sizes and I have a subscription?

If you only want one of your prints to be a different size, we would suggest purchasing that print individually so you don't lose your subscriber rights. You would still receive your subscriber discount on any additional items purchased. Otherwise, we would cancel your subscription and place you in a new subscription for the new size (we may or may not be able to match your existing number.)

Does every print come with a Certificate of Limitation and Authenticity?

Yes. Every print comes with a matching certificate signed by the artist and publisher. Some certificates may have a facsimile artist signature in the case where an artist has a challenge signing that many certificates. Artist signatures on the prints themselves are always hand-signed.

Will these ever be reprinted?

As a limited edition, no. This is a limited edition print that is numbered as such and will never be reprinted by Suntup Editions in any limited form again. We may offer unsigned prints in the future that are not part of any limited series.



Can I pick my number?

We will try to accommodate all requests on a first come, first serve basis – although requests are not guaranteed.

Can I have number 19?

No.

How about number 1?

Maybe.

Will there be any variant prints?

Yes, several. We have the Gold Foil version, the glow-in-the-dark version, and the Platinum Edition. You will need to collect all of these in order to be eligible to purchase the Pearlescent Blue Ultra Deluxe Grandmaster Metal Print variant.

Is it true that Paul Suntup was once featured in Cosmopolitan Magazine?

Yes, that is quite true.

Does Stephen King get a free subscription?

Absolutely. Have him contact us, and we'll hook him up.

THE SHINING

Stephen King's *The Shining* is a must-have for any King collector's bookshelf. A truly terrifying masterpiece that King wrote when inspired by staying at *The Stanley Hotel* in Colorado. Suntup Editions presents the complete cover art as it was intended by the artist, in a clear, showcased, and vibrant collectable fine art print, signed and limited to only 100 copies worldwide.



A must-have for any true Stephen King fan! Available in your choice of size:
18" x 24" or 12.5" x 17"

"These prints are as good as I've ever seen. They are beautiful. The paper looks like the most expensive quality paper, it's very thick, and I love the watercolor texture of the paper itself." – Dave Christensen, Illustrator for *The Shining*

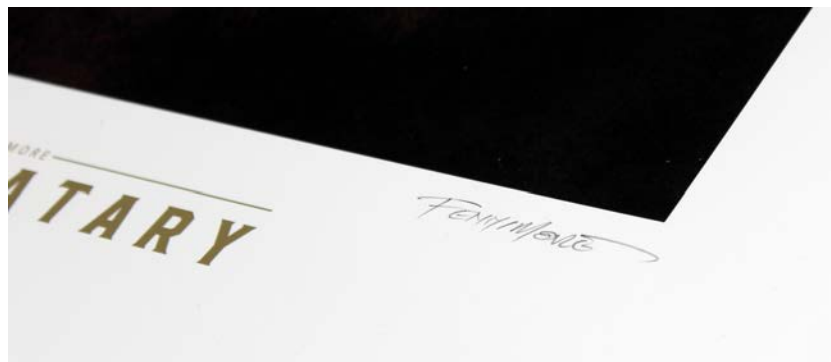
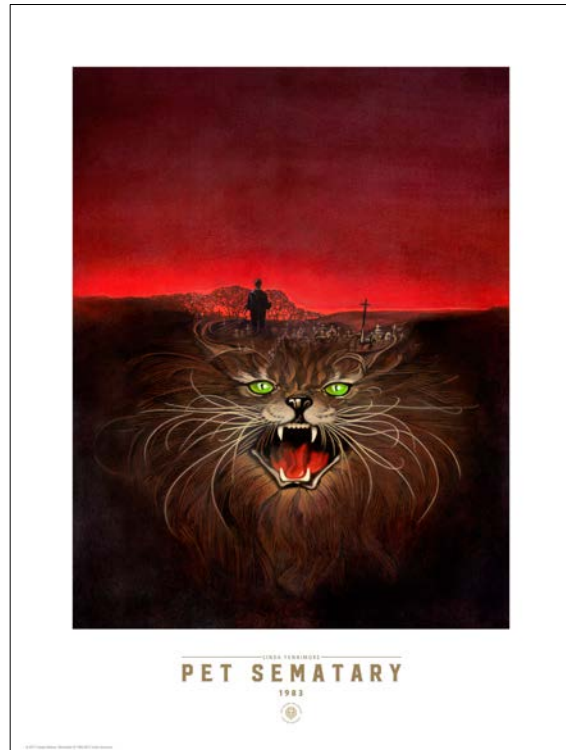


PET SEMATARY

Publishers Weekly called it “the most frightening novel Stephen King has ever written.” - Now, you can commemorate King’s terrifying novel in a whole new way. When comparing the printed dust jacket, we discovered that the lower section of the artwork had been trimmed. We present now, the complete cover art as it was intended by the artist, in a bold and vibrant reproduction that is so good, you will have a hard time discerning the original from this fine art print. Really, you have to see this print to believe it. You have never seen the cover art from *Pet Sematary* look this good.

View the artwork the way it was created before the publisher’s revisions and requested alterations. Complete your Stephen King collection with the power to showcase one of just 100 signed prints available worldwide.

“I was knocked out when I saw these prints. I have never seen *Pet Sematary* reproduced to look this wonderful.” – Linda Fennimore, Illustrator for *Pet Sematary*

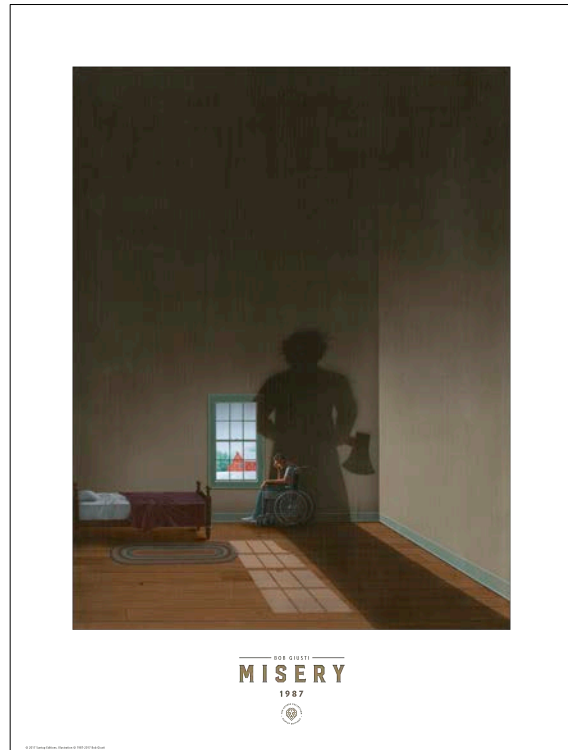


MISERY

Travel back to 1987 with this vibrant, detailed poster by your side. Every brush stroke will have you reminiscing about one of Stephen King's greatest novels, *Misery*. A must-have for every collection, this fine art print showcases the first edition cover artwork like never before.

Signed by the artist and limited to just 100 copies worldwide, don't miss your chance to display the brilliant artwork from the book USA Today called "Stephen King's best...genuinely scary."

The artist, Bob Giusti says, "I think these prints are spectacular. I have not seen better in this type of printing. They're really perfection. He has held to the colors well. If I put the print next to my original of *Misery*, it's spot on."

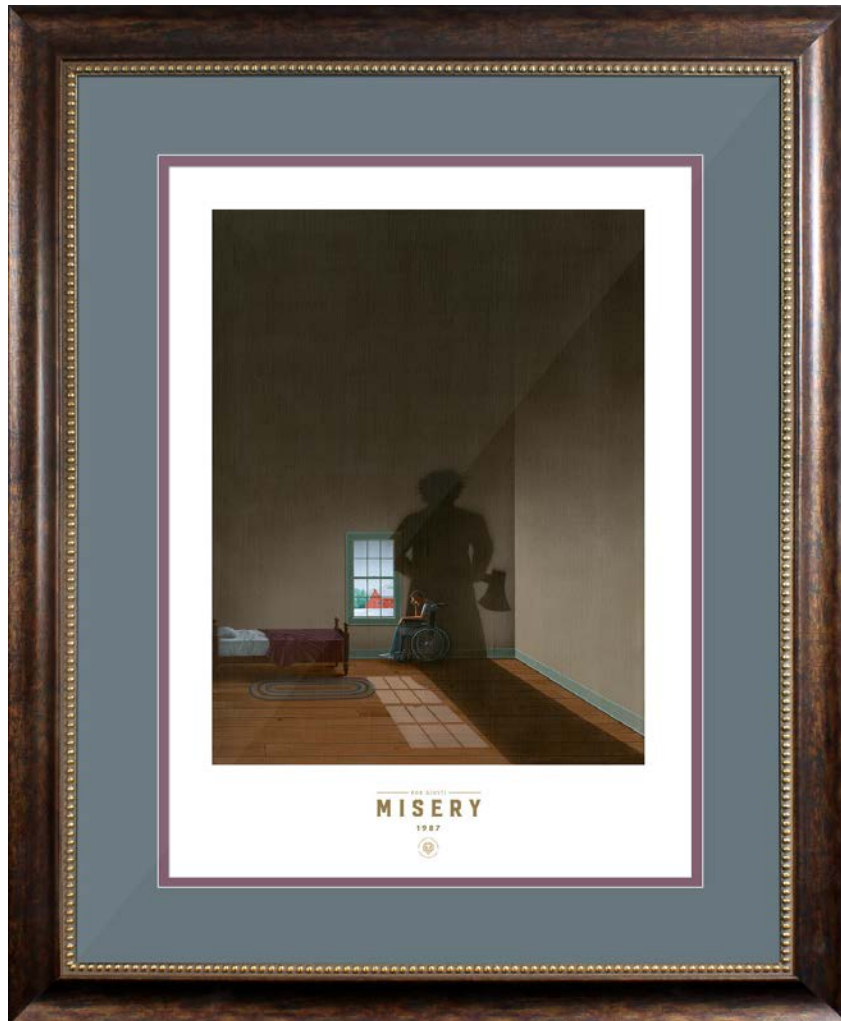


CUSTOM FRAMING





Pet Sematary Large Print Custom Frame



Misery Large Print Custom Frame



The Shining Large Print Custom Frame

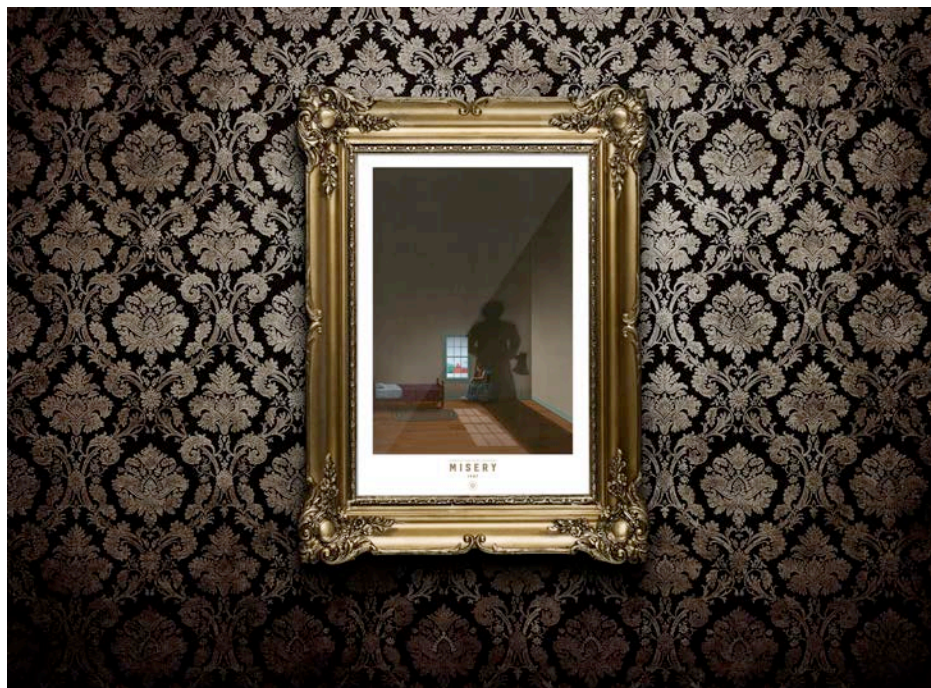


COLLECTION IMAGES





Frame idea only. Not a custom frame option.



Frame idea only. Not a custom frame option.



Frame idea only. Not a custom frame option.



Frame idea only. Not a custom frame option.



The Shining and Pet Sematary Original Remarks by Dave Christensen and Linda Fennimore



Oversize Gallery Wrap Prints Available Fall 2017



In-stock and available to order now at:
<https://suntup.press>
While supplies last.